

Hello Clarinetists,

Chris and I look forward to working with you this summer and seeing some familiar faces and meeting new ones! The first thing we do at the beginning of each week is hear a small "audition" to place each of you in an ensemble with an assigned part.

We generally ask for:

- a scale or 2

- a chromatic scale (1, 2 or 3 octaves)

- then an etude or solo if you have one

- and a little bit of sight-reading.

.....all at the speed you are most comfortable with

In case you do not have material, we have provided a scale sheet and some audition etudes to prepare. There are 3 etudes, from easier to harder. Feel free to **prepare 1 or 2 of these, or any parts that best suit your comfort level** OR bring in your own pieces.

These playing "auditions" are just to help familiarize us with your playing and place you in ensembles the best we can. There is no pressure to meet any certain level.

See you soon,
Jana and Chris

ARINE I
UPES
-Lester

A. Awkward Dan * Prepare all, or whatever etude or part you wish.

Allegro (♩ = 69)

OR SLOW 4/4

mp

can stop here or...

cresc.

here.

SLOW
Allegretto (♩ = 50)

B. Hill and Dale

mp

mf

C. Tongue Twister

Moderately Fast

mf

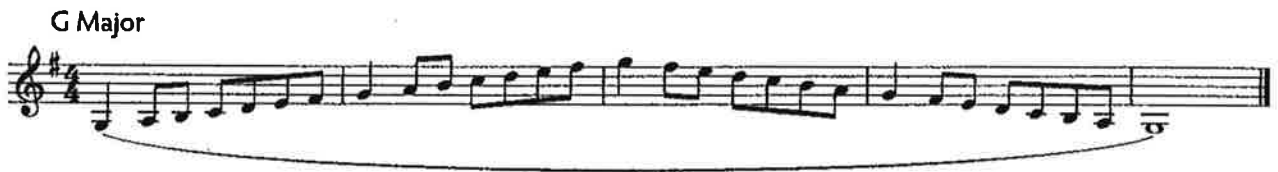
f

A

A

Clarinet Scales for Placement Auditions

- * Learn as many of these scales as you can.
- * Feel free to play only the first octave if you are not familiar with the upper octave.
- * Practice all slurred and all tongued.



- * Also, **add your chromatic scale** (every note, eg. C C# D D# etc); start as low as you can and as high as you are comfortable with. (Maximum – low E to altissimo G)
 - All slurred, up and down.